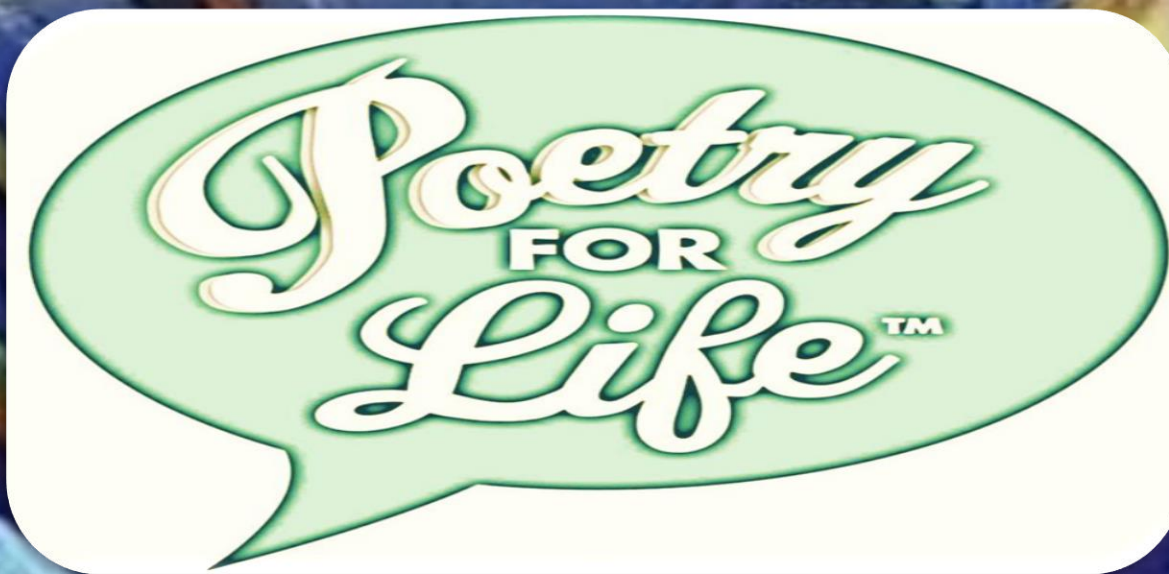


# WELCOME CLASS



Fonte <http://www.poetryforlife.co.za>

April/2018



Faculdade de Formação de Educadores do Recife  
Professor Paulo Freire



**RECIFE**  
PREFEITURA DA CIDADE



# DIVULGAÇÃO

## CURSO EaD – Processamento Auditivo: Fundamentos para Professores/as



**Objetivo:** Instrumentalizar o(a) professor(a) para atuar na promoção do desenvolvimento da comunicação, bem como na identificação precoce de problemas relacionados à audição e linguagem que podem interferir na aprendizagem.

**Público:** Professores/as em regência no Ciclo de Alfabetização

**Carga horária:** 20 h ( 1 encontro presencial )

**Certificação:** PROEXT/UFPE

**Informações e inscrições:** 09 de abril até 04 de maio de 2018 através do site da EFER Prof. Paulo Freire: [www.recife.gov.br/efaerpaulofreire/](http://www.recife.gov.br/efaerpaulofreire/)

REALIZAÇÃO:



UNIVERSIDADE  
FEDERAL  
DE PERNAMBUCO



Escola de Formação de Educadores do Recife  
Professor Paulo Freire



**RECIFE**  
PREFEITURA DA CIDADE



# DIVULGAÇÃO

PESQUISA: SAÚDE VOCAL E AUDITIVA DOS/AS DOCENTES EM REGÊNCIA DA REDE MUNICIPAL DE ENSINO DO RECIFE

**OBJETIVO:** A partir dos resultados da pesquisa, realizada pela UFPE, estruturar um programa de promoção à saúde da comunicação humana nos aspectos Audição e Voz para os/as docentes da Rede Municipal.

Para participar da pesquisa os/as docentes devem entrar no site da EFER Prof. Paulo Freire até dia 13/04/2018:

[www.recife.gov.br/efaerpaulofreire/](http://www.recife.gov.br/efaerpaulofreire/)

REALIZAÇÃO:



UNIVERSIDADE  
FEDERAL  
DE PERNAMBUCO



Escola de Formação de Educadores do Recife  
Professor Paulo Freire



**RECIFE**  
PREFEITURA DA CIDADE

# PRESENTATION

This training session has the purpose of contextualizing some cultural aspects and linguistic specificities of South African English and suggests diverse strategies for the organization of pedagogical work in the classroom.

# GUIDELINES:

- **Welcome class! Time to Poetry with Gcina Mhlophe**
- **Reflecting about teaching practices:: Reactivating last proposal.**
- **Opening class :QUIZ: What do you know about South Africa?**
- **Group work: Think, talk to your partner And share with the group!**
- **Coffee Break!**
- **Video session: English in South Africa pronunciation!**
- **Time to have fun: Let's Play cards!**
- **Listen to the Music And connect with the culture: Different Colours/ One people Luke Dube!**
- **Proposal for the next meeting!**
- **Time to evaluate the training session!**

# POLÍTICA DE ENSINO DA RMR



CLIQUE NO LINK ABAIXO  
PARA FAZER O DOWNLOAD.

<http://www.recife.pe.gov.br/efaerpaulofreire/politica-de-ensino>

APRIL/2018



Escola de Formação de Educadores do Recife  
Professor Paulo Freire



**RECIFE**  
PREFEITURA DA CIDADE

# OBJECTIVES OF THIS SESSION

- **Analyse the linguistic variant and the culture of South African English.**
- **Compare some specificities of the South African English with the British and American English.**
- **Broaden the didactic strategies in our teaching practice.**



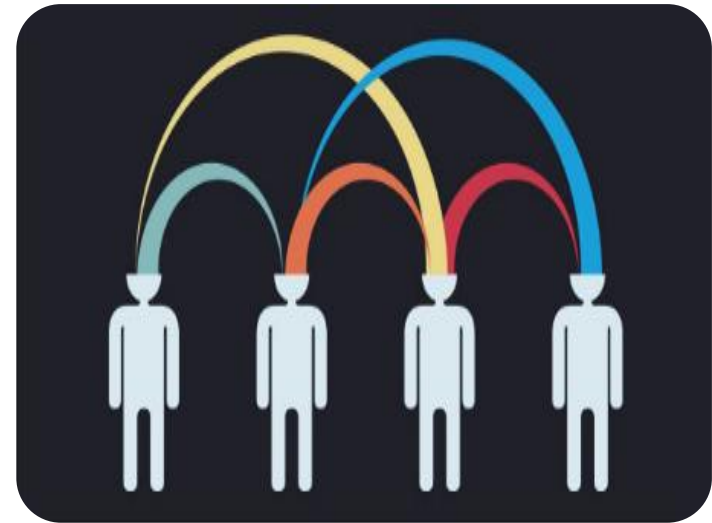
# LEARNING RIGHTS:

- **USE THE KNOWLEDGE OF THE LANGUAGE AS AN INSTRUMENT TO ACCESS INFORMATION ABOUT OTHER CULTURES AND SOCIAL GROUPS.**

**REACTIVATING OUR LAST PROPOSAL!**

# REFLECTIONS ABOUT OUR TEACHING PRACTICES

Did you help your  
students activate their  
CULTURAL ANTENNAS in  
your classes? If yes, how  
did it happen?



APRIL/2018

# OPENING CLASS

## QUIZ???

WHAT DO YOU  
KNOW ABOUT  
SOUTH AFRICA???

Fonte

APRIL/2018



Escola de Formação de Educadores do Recife  
Professor Paulo Freire



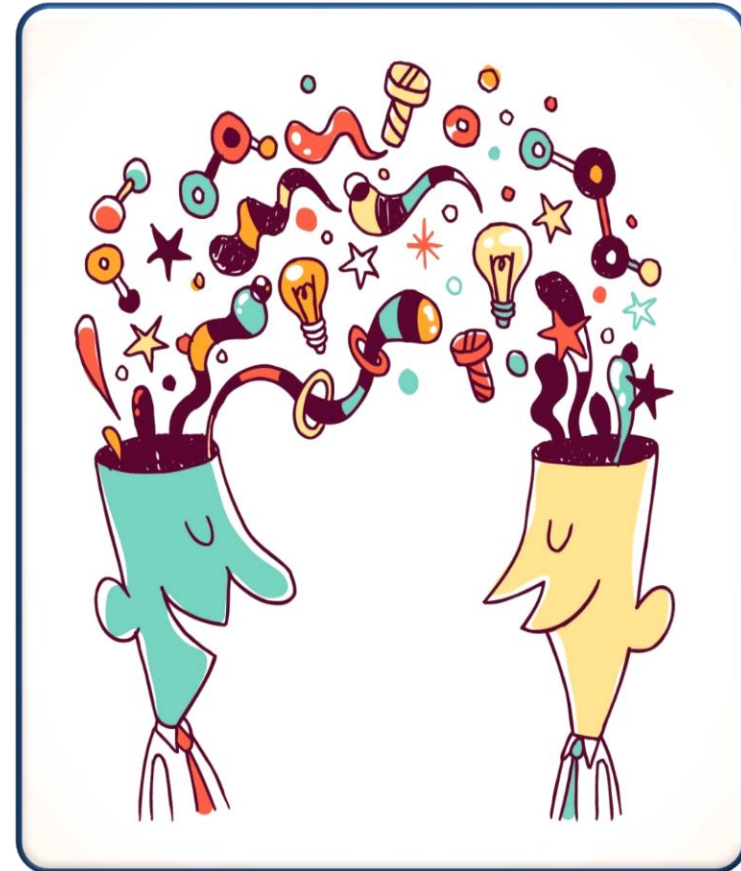
**RECIFE**  
PREFEITURA DA CIDADE

# ATIVIDADE EM GRUPO:

Pense, compartilhe com o par e divida com o grupo.

Based on the Cultural collections to foster curiosity and openness to English speaking cultures:

Think and decide in group which aspects of South African culture you would like your students to explore and share with the group.



[studiomariosivano.it](http://studiomariosivano.it)



# CONCEPTS EXPLANATION:

## Acquiring strategies for culture learning!

**1. Cultural learning model deals with specific strategies for becoming more culturally competent.**

**2. Strategies include having students learn to develop their cultural observation skills.**

**3. Teachers need to provide students opportunities to explore and recognize cultural differences.**

# CONCEPTS EXPLANATION:

## Acquiring strategies for culture learning!

Bryan (1997) mentions who are “Interculturally competent” have a solid understanding of their own culture. According Bryan it includes:

**Curiosity and openness to other cultures.**

**An understanding of social practices.**

**The ability to use new knowledge of a culture in authentic situations.**

**The ability to critically evaluate the cultural practices and products.**

**The ability to relate something from another culture.**

# COFFEE BREAK:



[pt.vecteezy.com](http://pt.vecteezy.com)

APRIL/2018




Escola de Formação de Educadores do Recife  
Professor Paulo Freire



**RECIFE**  
PREFEITURA DA CIDADE

# VIDEO AND DISCUSSION:



A screenshot of a YouTube video player. The browser address bar shows the URL [https://www.youtube.com/watch?v=-Rul8e\\_V-ek](https://www.youtube.com/watch?v=-Rul8e_V-ek). The YouTube logo and a search bar with the text "Pesquisar" are visible. The video content shows a young man with short brown hair, wearing a light purple button-down shirt, sitting on a green patterned couch. He has his hands clasped in front of him and is looking directly at the camera. The video player interface at the bottom shows a progress bar at 0:57 / 2:29, along with play, volume, and other control icons.

English in South Africa: pronunciation, phrases, etc.

[https://www.youtube.com/watch?v=-Rul8e\\_V-ek](https://www.youtube.com/watch?v=-Rul8e_V-ek)

APRIL/2018



# TIME TO HAVE FUN: PLAY GAME AND REFLECT!

**Teachers!**

**You're going to have fun now!  
Let's play cards in group and  
learn some words and  
expressions of South African  
standard English. You need to  
form 3 pairs of cards with Soth  
African words with their  
respective meaning in the  
British/American standard  
English.**



[oficinasdealfabetização.blogspot.com](http://oficinasdealfabetização.blogspot.com)

APRIL/2018



Escola de Formação de Educadores do Recife  
Professor Paulo Freire



**RECIFE**  
PREFEITURA DA CIDADE

# LISTEN TO MUSIC:

## *DIFFERENT COLOURS/ ONE PEOPLE-Lucky Dube*



Youtube.com

APRIL/2018



Escola de Formação de Educadores do Recife  
Professor Paulo Freire



**RECIFE**  
PREFEITURA DA CIDADE

# THINKING ABOUT THE NEXT MEETING!

Based on the concept of ***"Cultural collections"***, you need to plan and organize a variety of formats and information from South African culture. Suggest and decide with your students which aspects of culture they would like to explore: etiquette, manners, food, music, customs, fashion, games, etc.

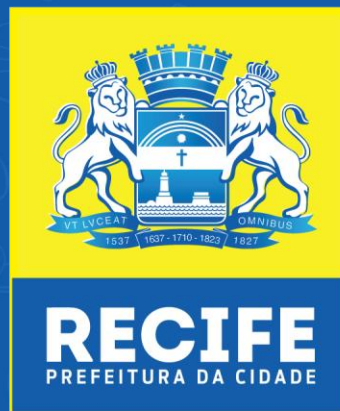
# REFERENCES:

1. FRANK, Jerrold. **Raising Cultural Awareness in the English Language Classroom.** English Teaching Forum n° 4, Kyiv, p. 2-11, 2013;
2. RECIFE. Secretaria de Educação. **Política de Ensino da Rede Municipal do Recife:** subsídios para atualização da organização curricular. / Élia de Fátima Lopes Maçaira (Org.), Katia Marcelina de Souza (Org.), Marcia Maria Del Guerra (Org.). 2 ed. Recife: Secretaria de Educação, 2014;
3. LIMA, Denilson de. **Inglês Sul-africano: características e curiosidades.** Inglês na ponta da língua-Learn English anywhere. Disponível em <https://www.southafrica.net/br/pt/travel>. Em 02/04/2018.
4. <http://blog.sa-venues.com/attractions/facts-about-south-africa/>
5. [library.kcc.hawaii.edu/SOS/.../Jeopardy%20Template.ppt](http://library.kcc.hawaii.edu/SOS/.../Jeopardy%20Template.ppt)
6. <https://www.letras.mus.br/lucky-dube/226388/traducao.html>
7. <http://www.our-africa.org/south-africa/people-culture>
8. <http://www.poetryinternationalweb.net/pi/site/poem/item/19037/auto/0/STRENGTHEN-LOVE>
9. <http://www.southafricaexplorer.co.za/articles/facts-about-south-africa.html>
10. [https://www.youtube.com/watch?v=-RuI8e\\_V-ek](https://www.youtube.com/watch?v=-RuI8e_V-ek)





Escola de Formação de Educadores do Recife  
Professor Paulo Freire



PREFEITURA DO RECIFE  
Secretaria de Educação  
Diretoria Executiva de Gestão Pedagógica  
Escola de Formação de Educadores do Recife Professor Paulo Freire  
Rua Real da Torre, 299, Madalena, Recife/PE - CEP: 50.610-000  
Tel: 81 3355-5851/ 3355-5856  
<http://www.recife.pe.gov.br/efaerpaulofreire>